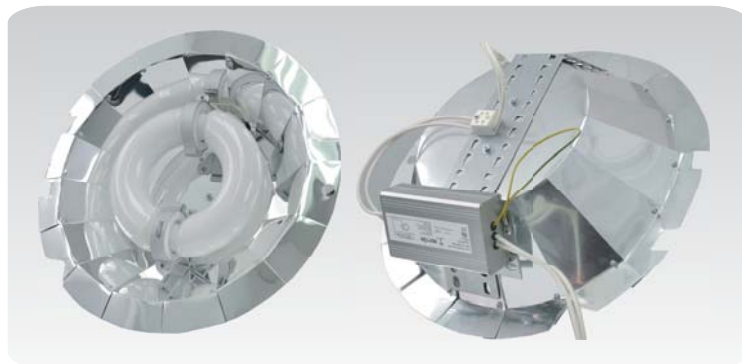


INDUCTION - Custom Post-Top Retrofit Kit

100,000 Hour Life

The Next Generation of Lighting



KIM POST-TOP - CC/CCS 17

NEPTUN CERTIFIED RETROFIT KIT
FOR KIM LIGHTING - CC/CCS 17 FIXTURE

Specification:

- Ballast Type	Electronic
- Start Method	InstantON™
- Hot Re-start	InstantON™
- Universal Input Line Voltage	120-277 VAC
- Input Line Frequency	50/60 Hz
- Lamp/Ballast System Life	100,000 Hrs.
- Lumen Maintenance @75,000Hrs	>70%
- Color Temperature	5000°K
- Color Rendering Index (CRI)	above 83
- Minimum Starting Temperature	-20°F
- Maximum Operating Temperature	160°F
- Lamp Operating Frequency	250 kHz
- Power Factor	> 0.98
- Total Harmonic Distortion	< 10%
- Inrush Current Peak	< 10 Amp
- FCC Compliance	Part 18, Subp. C

Applications, Features, and Benefits

- Custom retrofit kit for the Kim Lighting - CC/CCS 17 post-top fixtures
- Custom designed anodized aluminum reflector for increased illumination
- Bright White light (5000°K) for greater visibility and safety
- High Quality - Glare Free light with CRI above 83
- Electronic Ballasts made with long life components
- InstantON(TM) flicker-free Cold Start and Hot Re-Start
- High Power Factor, Low THD Ballast technology
- Advanced phosphors for high Lumen Maintenance and high lumen output
- Made with Amalgam Technology
- Up to 20 year maintenance free operation
- Retrofit kit comes completely assembled for simple drop-in installation
- 5 year system warranty

Product Information - Retrofit Kit (Bulb-Ballast-Reflector)

Item No.	Description	Watts	Initial Lumens	Line Voltage Supply	Line Current	Total Harmonic Distortion (THD)	Power Factor	Packaging Dimensions		
								Width	Length	Height
KPTCC-26040RK-R17-UNV	CC/CCS17 - Retrofit Kit	40	3,200	120-277 VAC	0.35-0.15 Amp	<10%	0.98	18 in. 457 mm	18 in. 457 mm	8 in. 203 mm
KPTCC-26055RK-R17-UNV	CC/CCS17 - Retrofit Kit	55	4,400	120-277 VAC	0.48-0.20 Amp	<10%	0.98	18 in. 457 mm	18 in. 457 mm	8 in. 203 mm
KPTCC-26065RK-R17-UNV	CC/CCS17 - Retrofit Kit	65	5,200	120-277 VAC	0.56-0.24 Amp	<10%	0.98	18 in. 457 mm	18 in. 457 mm	8 in. 203 mm
KPTCC-26080RK-R17-UNV	CC/CCS17 - Retrofit Kit	80	6,400	120-277 VAC	0.69-0.30 Amp	<10%	0.98	18 in. 457 mm	18 in. 457 mm	8 in. 203 mm
KPTCC-26100RK-R17-UNV	CC/CCS17 - Retrofit Kit	100	8,000	120-277 VAC	0.87-0.37 Amp	<10%	0.98	18 in. 457 mm	18 in. 457 mm	8 in. 203 mm
KPTCC-26120RK-R17-UNV	CC/CCS17 - Retrofit Kit	120	9,600	120-277 VAC	1.05-0.45 Amp	<10%	0.98	18 in. 457 mm	18 in. 457 mm	8 in. 203 mm

NEPTUN Light, Inc.
Questions and Comments:
service@neptunlight.com
Toll-Free: 1-888-735-8330

© Copyright 2009
NEPTUN Light, Inc.



NEPTUN
L I G H T

1.) REMOVE EXISTING COMPONENTS

- A.) Disconnect power to fixture. Fixture must be removed from pole for retrofit installation.
- B.) Open fixture housing by removing screws on lens.
- C.) Remove existing reflector, socket, ballast, ignitor, and any other existing components.

2.) MOUNT NEW COMPONENTS

- A.) Wire the the ballast to the power supply.
- B.) For wiring diagram, see Pg. 2
- E.) Place reflector with pre-installed ballast and bulb into the fixture.
- D.) Match the supplied holes with the existing lens screw holes. Reflector can be secured by closing the lens and tightening screws. (Fig. A)
- F.) Remount fixture.

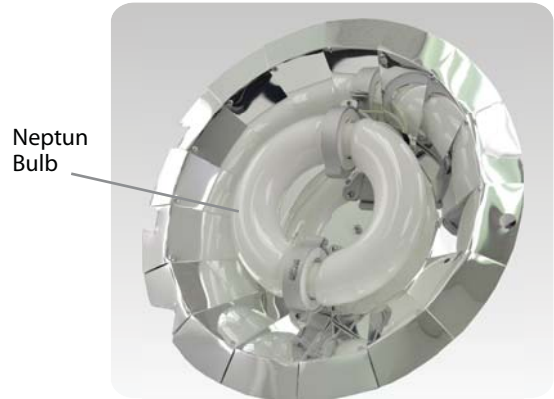
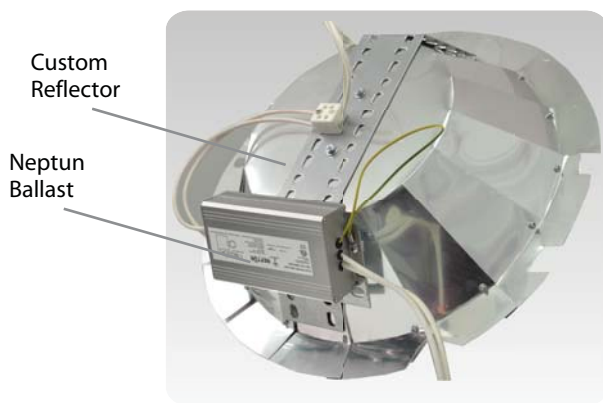


Fig. A



CAUTION!

DISCONNECT POWER SUPPLY BEFORE INSTALLATION OR MAINTENANCE.
INSTALLATION OF THIS PRODUCT SHOULD BE DONE BY A FULLY QUALIFIED AND
LICENSED ELECTRICIAN OR TECHNICIAN.

INFORMATION

- A.) The Kim - CC/CCS 17 post-top fixtures can be retrofitted using a Neptun Circline Retrofit Kit.
- B.) This fixture requires a custom designed Neptun reflector
- C.) This fixture is retrofitted using a Neptun 100W induction bulb and Electronic Ballast.
- D.) This custom retrofit is available in 40W, 55W, 65W, 80W, 100W, & 120W
- E.) The Neptun Electronic ballast is for universal voltage 120V - 277V.



ORDERING INFORMATION

40 Watt Bulb, Ballast, & Reflector = KPTCC-26040RK-R17-UNV

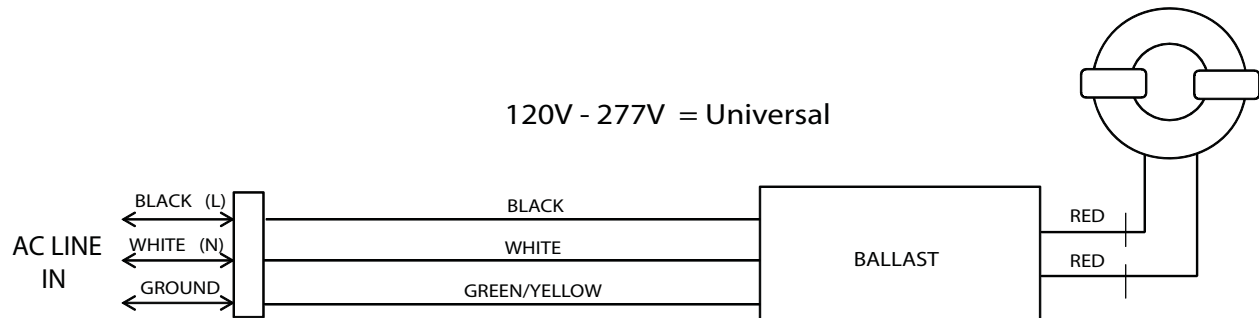
55 Watt Bulb, Ballast, & Reflector = KPTCC-26055RK-R17-UNV

65 Watt Bulb, Ballast, & Reflector = KPTCC-26065RK-R17-UNV

80 Watt Bulb, Ballast, & Reflector = KPTCC-26080RK-R17-UNV

100 Watt Bulb, Ballast, & Reflector = KPTCC-26100RK-R17-UNV

120 Watt Bulb, Ballast, & Reflector = KPTCC-26120RK-R17-UNV



CAUTION!

DISCONNECT POWER SUPPLY BEFORE INSTALLATION OR MAINTENANCE.
 INSTALLATION OF THIS PRODUCT SHOULD BE DONE BY A FULLY QUALIFIED AND
 LICENSED ELECTRICIAN OR TECHNICIAN.